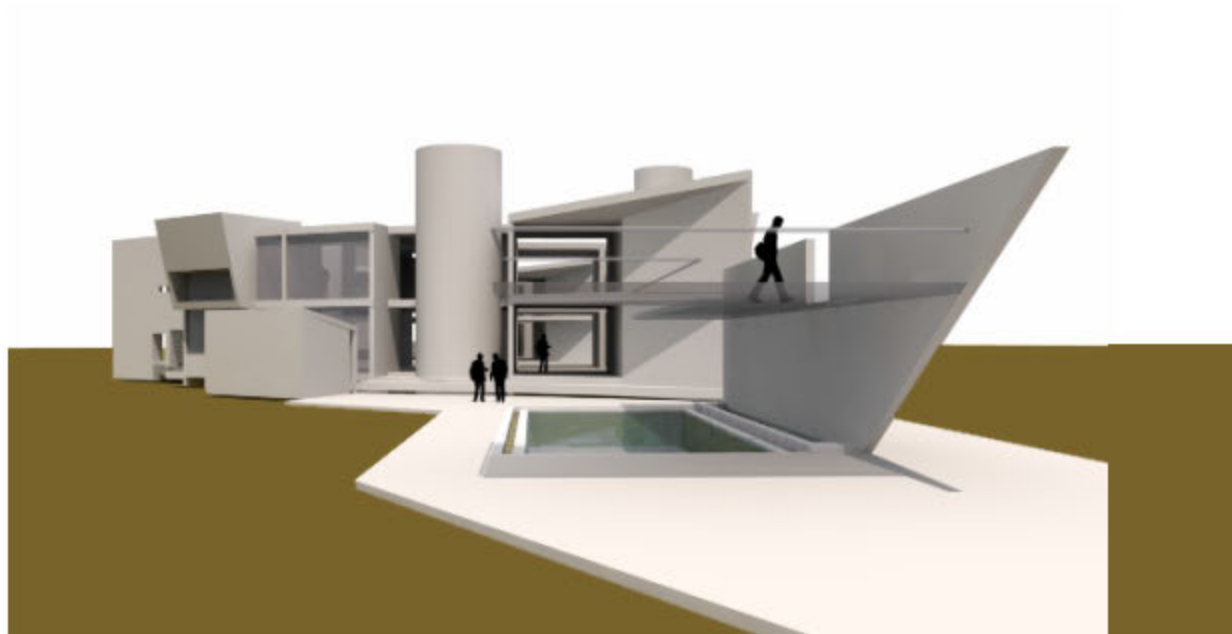


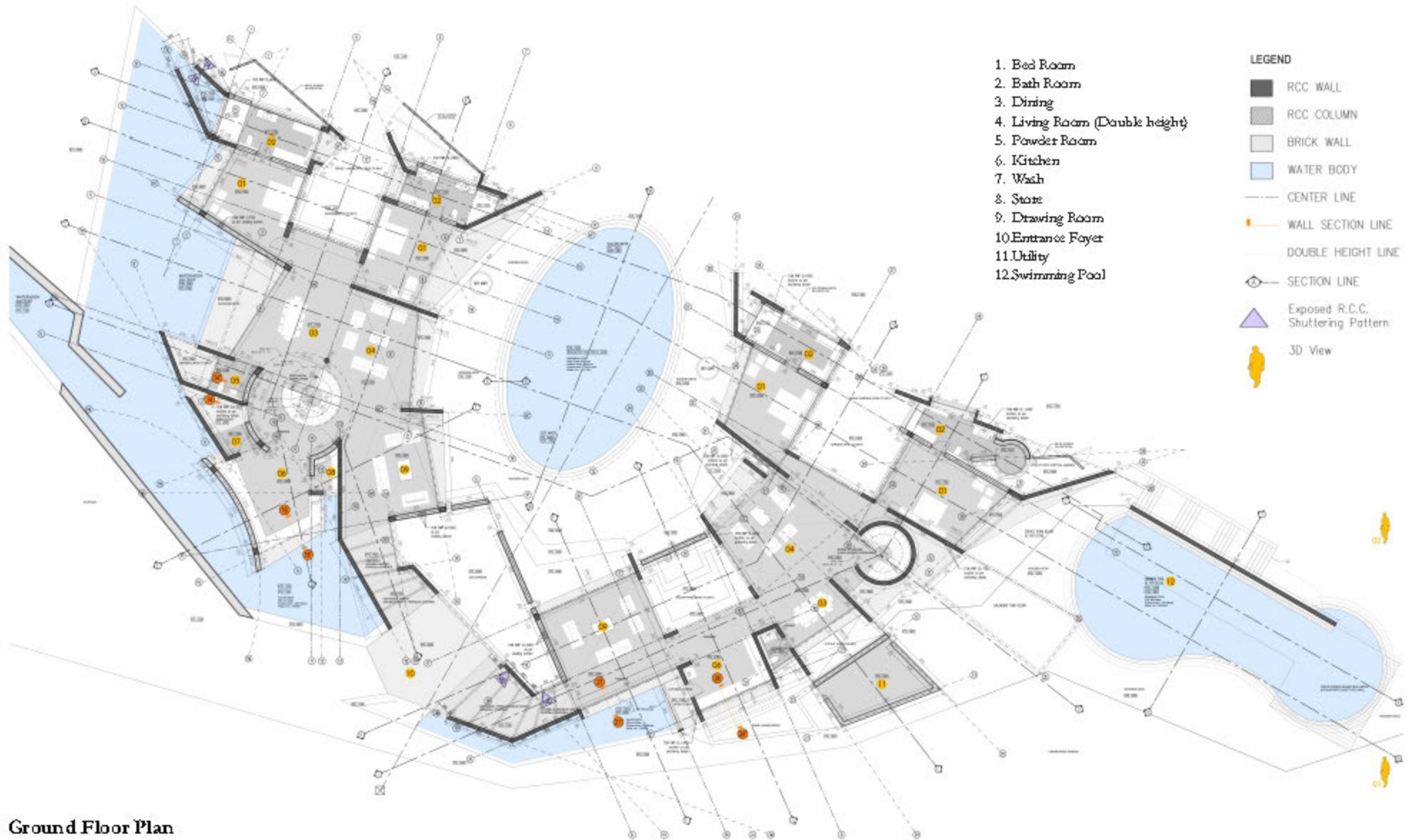
**Devang**

| [devang@outlook.in](mailto:devang@outlook.in)

Master of Environmental Building Design-'13 | University of Pennsylvania



A suburban villa primarily built with exposed R.C.C. construction for two separate families. A common swimming pool divides the two residences. The basement floor consist a two full fledged movie theaters and one 8 ball billiard table. Strategically placed and structurally integrated exposed R.C.C. folded walls are special feature of the villa.



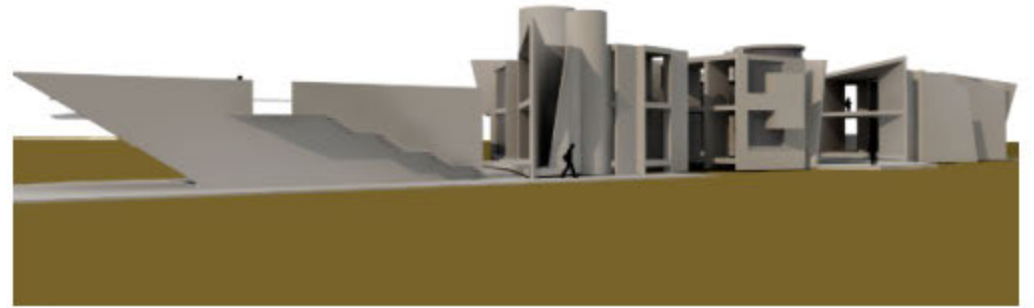
Ground Floor Plan

**Villa**

**Role** / **Architect**  
**Phase** / **Under Construction**

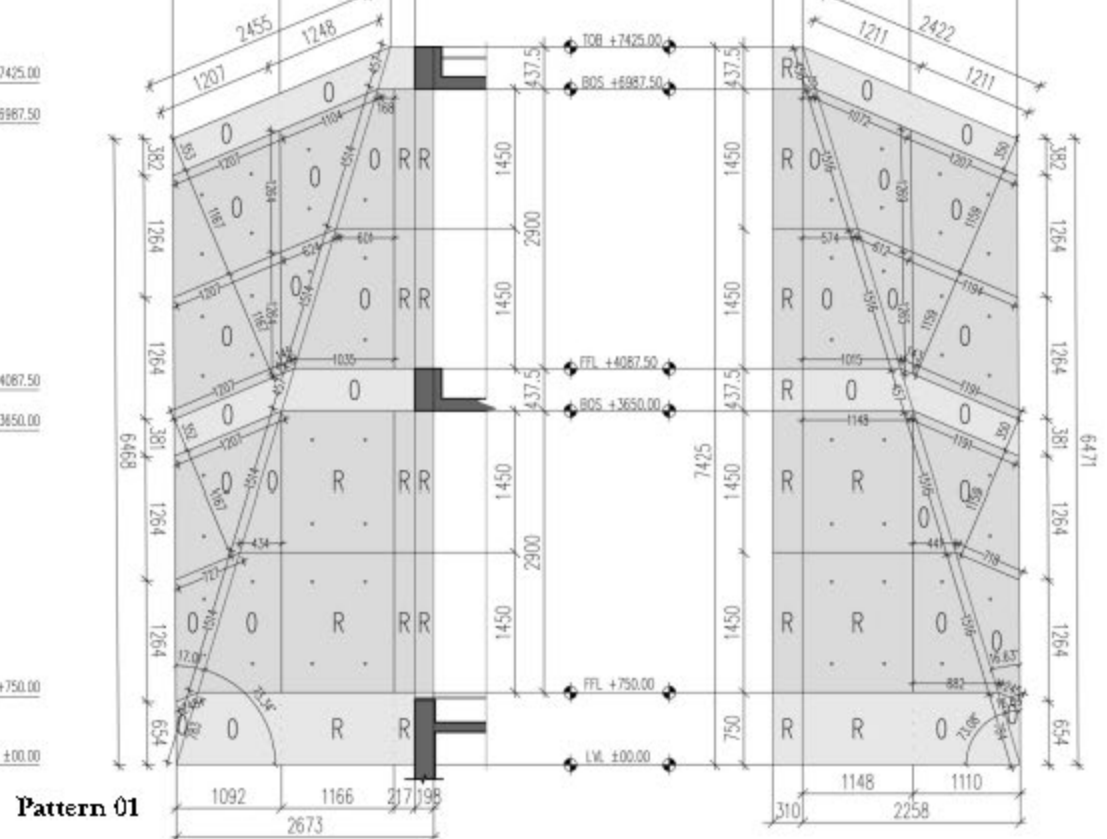
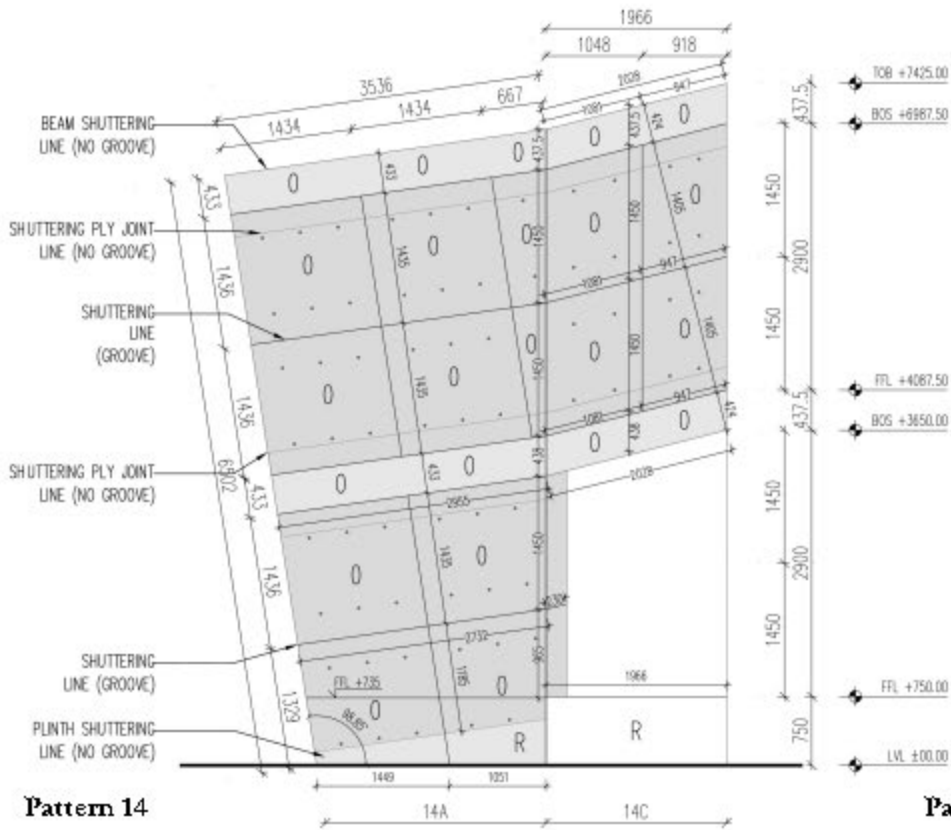
**SamARCH Architects** / **2011**  
**Location** / **Ahmedabad**

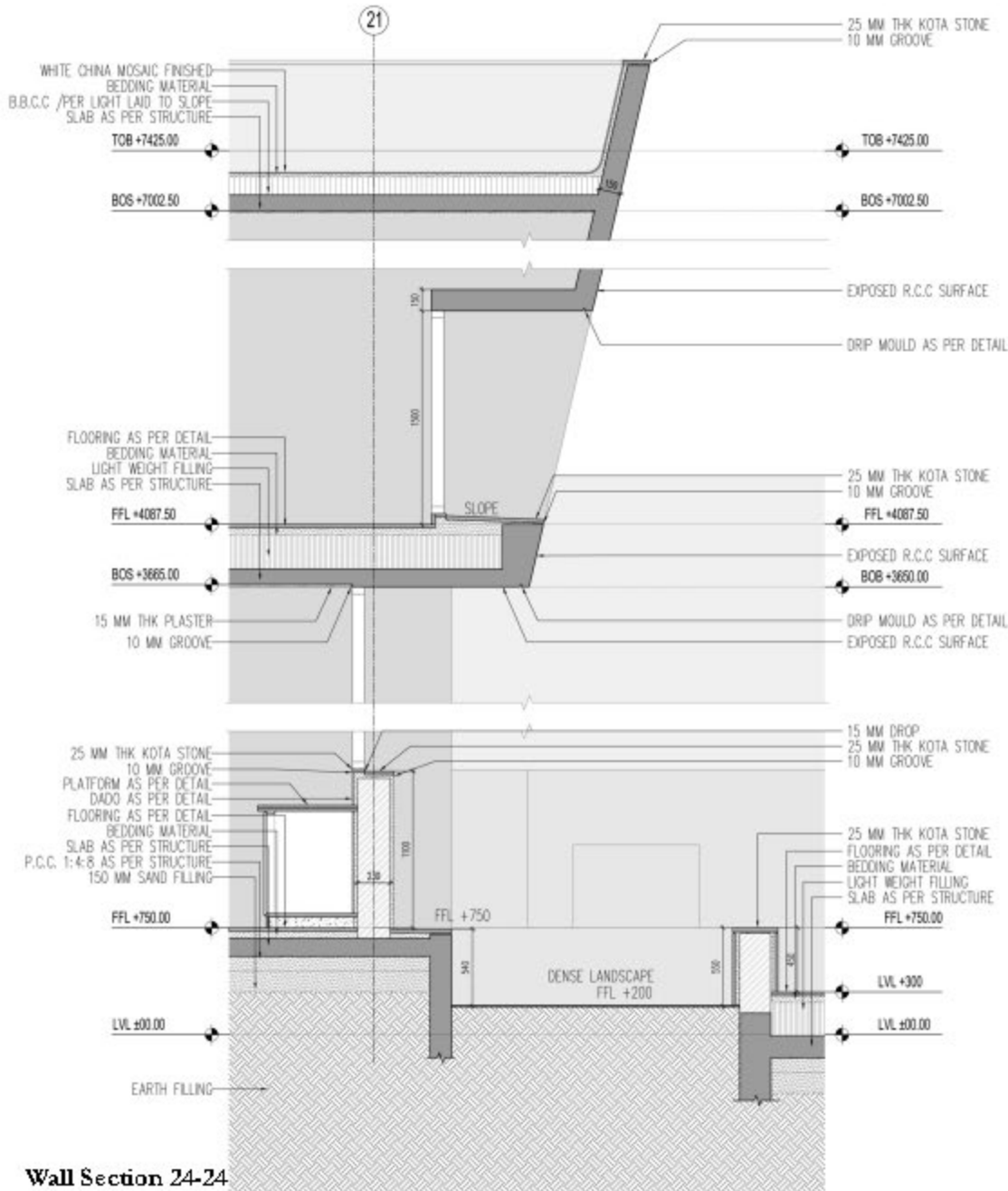
**Professional**  
**02**



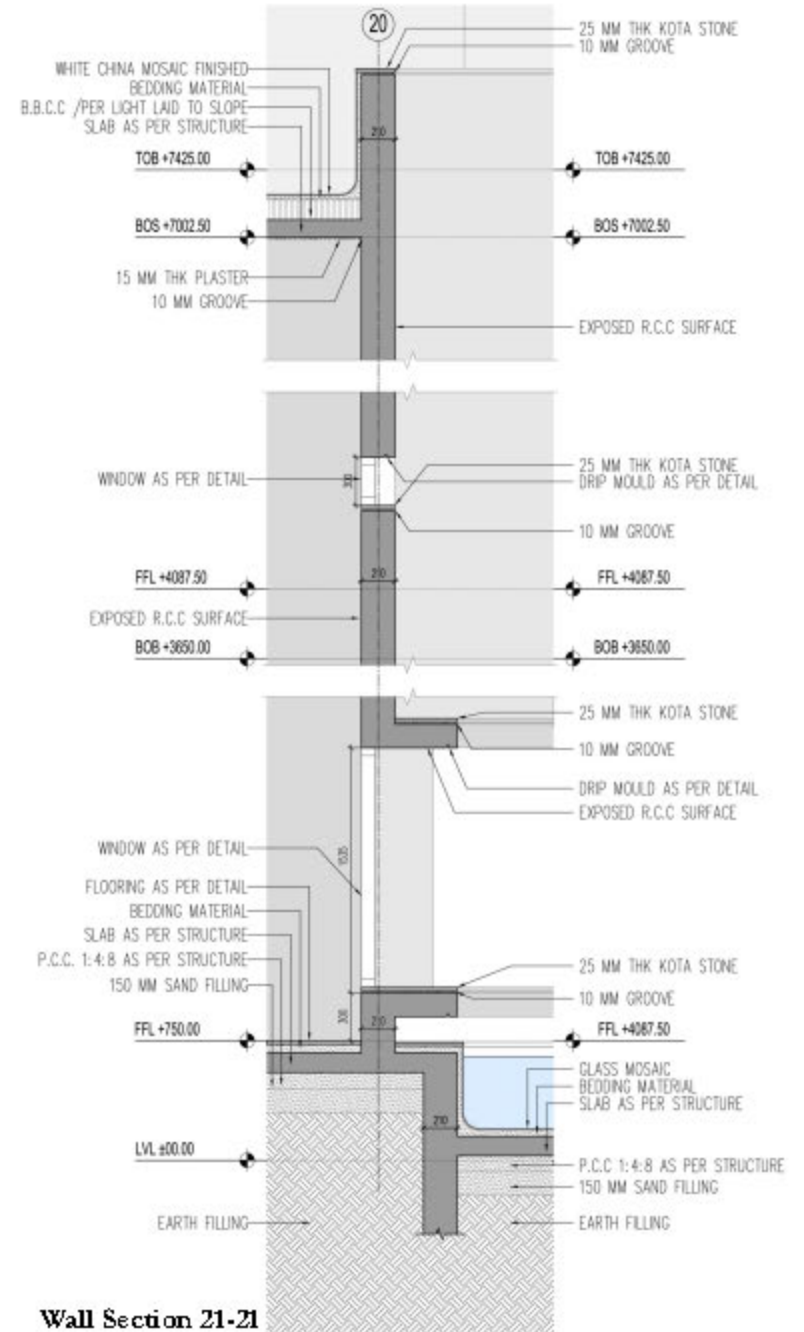
View 01

View 02





Wall Section 24-24



Wall Section 21-21










NOMENCLATURE

FFL - FINISHED FLOOR LEVEL  
FDL - FINISHED DECK LEVEL  
FGL - FINISHED GROUND LEVEL  
FWL - FINAL WATER LEVEL  
TBM - TEMPORARY BENCHMARK

TOC - TOP OF CONCRETE  
BOS - BOTTOM OF SLAB  
TOB - TOP OF BEAM  
C/O - CENTER/OUT  
O/C - OUT/CENTER  
C/C - CENTER/CENTER  
O/O - OUT/OUT

LEGEND

-  RCC WALL
-  RCC COLUMN
-  BRICK WALL
-  WATER BODY
-  CENTER LINE
-  WALL SECTION LINE
-  DOUBLE HEIGHT LINE
-  SECTION LINE

-  FLP FOOT LIGHT POINT
-  F CEILING FAN POINT WITH FAN BOX & HOOK
-  TVJ T.V. JUNCTION FOR CO AXIAL
-  PL PENDENT CEILING LIGHT POINT
-  CP CEILING POINT
-  PL TRIMLESS 37MM CEILING LIGHT POINT

-  T CEILING MOUNTED TUBE LIGHT POINT
-  T WALL MOUNTED TUBE LIGHT POINT (1X28/36W)
-  T WALL MOUNTED CONTINUOUS UP-DOWN CHANNEL LIGHT
-  GB GROUND BURIAL LIGHT POINT
-  UPL UPLIGHTER BRACKET DOUBLE LIGHT POINT
-  UPL UPLIGHTER BRACKET SINGLE LIGHT POINT
-  PL PENDANT LIGHT POINT WITH HOOK
-  BL WALL MOUNTED BRACKET LIGHT POINT
-  WTBL WATER TIGHT BRACKET LIGHT POINT
-  RCLR RECESSED CEILING LIGHT IN RCC SLAB
-  RCLF RECESSED CEILING LIGHT IN FALSE CEILING
-  FL FLOOR LAMP
-  TP TELEPHONE POINT
-  PP W/S 6A/16A POWER PLUG POINT WITHOUT SWITCH
-  PP WS 6A/16A POWER PLUG POINT WITH SWITCH
-  SB SWITCH BOARD
-  DB DISTRIBUTION BOARD (ELECTRICAL)
-  BP BELL PUSH SWITCH
-  VOPM VOP MONITOR (I.L. 1450mm From FFL)



NEW TBM  
REFER DRAWING NO. AR\_WD\_03\_00